



ADVANCED TECHNOLOGY IN LUBRICATION SINCE 1933

SWEPACO
501

Premium Diesel Fuel Improver

**Powerful
Cetane Booster**
**Federal Ultra Low
Sulfur Fuel Compliant**

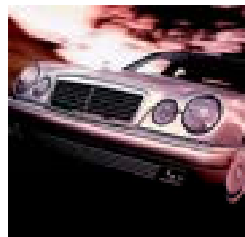
SWEPACO 501 Premium Diesel Fuel Improver is a highly effective **multi-function** diesel fuel improver that improves the combustion characteristics of today's low quality diesel fuels **and** prevents formation of sludge, varnish and gum deposits which slowly rob diesel engines of performance. SWEPACO 501's unique formulation delivers quicker, cleaner, more complete combustion by increasing cetane numbers of today's fuels. At the same time it fights the most common problems associated with ultra low sulfur diesel & bio-diesel fuel . . . injector fouling, sludging, oxidation, corrosion, icing and component wear. The result is cleaner engines and fuel systems, longer injector and injector pump life, better performance, lower emission levels, lower maintenance costs and improved fuel economy.



KEY FEATURES

- Improves fuel economy as much as 4% to 13.5% depending upon type of engine and service
- Increases cetane number of any diesel fuel for quicker, smoother, quieter, more complete combustion
- Protects against diesel & bio-diesel deposits & corrosion
- Removes & prevents both conventional injector deposits & difficult internal injector deposits that foul today's complex high pressure common rail fuel systems
- Reduces injector & injector pump wear caused by today's abrasive ultra low sulfur fuels by as much as 26%
- Reduces smoking, misfiring & knocking
- Up to 42% cleaner exhaust emissions
- Will not harm emission control devices such as EGR, DEF, SCF, particulate traps or catalytic converters
- Improves cold weather performance
- Improves diesel fuel stability and color in storage

Get the most out of your diesel engines & fuel . . .



AUTOMOTIVE



COMMERCIAL

Maximize performance and fuel economy, minimize downtime and emissions and protect your diesel fuel systems with SWEPACO 501.

PERFORMANCE

DESCRIPTION & PURPOSE

SWEPCO 501 Premium Diesel Fuel Improver is a highly effective multi-function diesel fuel additive. Besides improving lubricity and controlling combustion deposits, it increases the *cetane number* of any diesel or bio-diesel fuel. Increased cetane numbers result in improved combustion, lower emission levels and better cold weather operability. A special *Winter Formula* also provides protection from cold weather diesel fuel gelling problems.

PERFORMANCE TESTING

Peugeot DW10 Power Loss – None; complete restoration of power lost due to fouling

Peugeot XUD9 Nozzle Coking – 100% Residual Flow

Cummins L-10 Injector Depositing – Superior Rating (CRC 9.1 of 100 & Flow Loss < 5%)

ASTM D6078 BOCLE Wear – >26% Load Increase

ASTM D2274 Fuel Stability – >80% Reduction in Fuel Insolubles & No Change In Fuel Color

NACE Rust – No Corrosion Compared to 50-75% For Untreated Base Fuel

ASTM D1094 Water Tolerance – 50-65% Improvement Over Untreated Fuel

Anti-Foam Shake – >20% Reduction in Foam

Exhaust Opacity – Up To 42% Reduction

FTP Emissions (% Reduction) – Hydrocarbons >24%; Carbon Monoxide >15%; Particulates >1%

BENEFITS OF USE

Improves Ignition Quality of Any Diesel Fuel — Raises the cetane number of any diesel fuel

Improves Fuel Economy – Improves mileage as much as 4% to 13.5% depending upon type of engine and service

Reduces Regulated Diesel Exhaust Emissions — Reduces levels of hydrocarbons, carbon monoxide, nitrogen oxide and particulate matter

Reduces Diesel Noise & Vibration – Improved ignition results in quieter, smoother running engines and less knock at idle

Reduces Cold Weather Misfiring — Higher cetane levels help prevent cold weather misfiring

Keeps Injectors Clean for Better Fuel Ignition — Clean injectors insure proper fuel atomization for better combustion, more power and lower emissions

Does Not Increase Sulfur Levels — Keeps fuel in legal limits

Prolongs Life of Injectors & Pumps — Improved lubricity means less wear and longer injector and injector pump life even when using today's abrasive ultra low sulfur fuels

Easier Starting — Makes cold starting easier, lowers minimum cold start temperatures, improves both warm-up time and driveability before warm-up and reduces white smoke produced during warm-up

Reduces Sludge/Gum — Cleaner combustion reduces maintenance costs

Improves Storage Stability — Reduces sludge and other insolubles formed as a result of fuel oxidation by more than 80%

Corrosion Resistance — Protects against both water and fuel based corrosion

Faster Fill-Ups — Less foaming and faster foam dissipation means faster fill-ups

Water Separation — Allows water to be removed from tanks

RECOMMENDED FOR

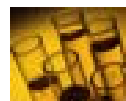
Treat any diesel and bio-diesel fuel in any type of diesel equipment or bulk diesel fuel storage.

TREATMENT RECOMMENDATIONS

Add to diesel fuel tank before filling. Available in two concentrations both of which provide identical performance levels at recommended treatment rates: **Convenient Automotive/Light Truck Blend (1:500)** -- One 12-oz (355-ml) bottle treats up to 47 gallons (178 liters) of fuel. **Highly Concentrated Commercial Blend (1:1000)** -- One quart (946-ml) bottle treats 250 gallons (946 liters) of fuel. One pail treats 5,000 gallons (19,000 liters). One drum treats 55,000 gallons (208,175 liters) of fuel. Treatment rate can be doubled to further improve cold start performance and warm up times.

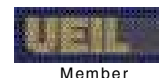
PACKAGING

Automotive/light truck blend available in cases of 20 twelve-ounce (355 ml) bottles. Commercial blend available in 55-gallon (205 liter) drums; 5-gallon (19 liter) pails and cases of 8 quart (946 ml) bottles. **Please specify standard or winter formula when ordering.**



A Product of SPX Technology™.

... the cutting edge performance SWEPCO Customers have come to expect since 1933



Southwestern Petroleum Lubricants, LLC

Fort Worth, Texas Phone: (817)332-2336 Fax: (800)736-5823 Web: www.swepcolube.com